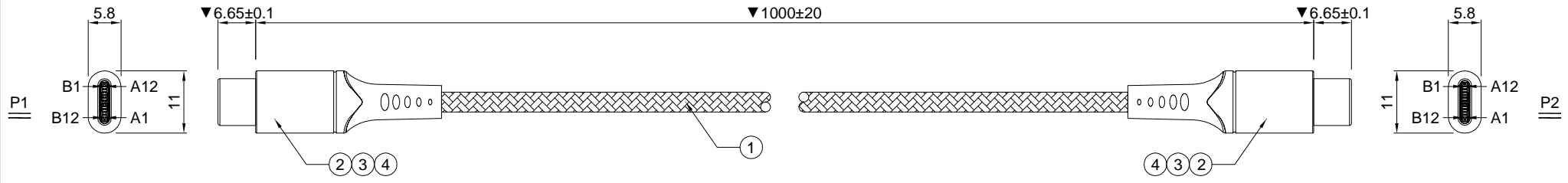


8		7		6		5		4		3		2		1		
TOOLING TYPE		TOOLING NO.		ACT								REVISIONS				
(P1, P2)		MPM-0550										REV.	ECN NO.	DESCRIPTION		
(P1, P2)		MPM-0444														



NOTES:
 1.CABLE TESTING CONDITIONS:
 1.1 100%OPEN,SHORT,MISS WIRE & INTERMITTENT TEST.
 1.2 CONDUCTOR RESISTANCE:2 ohms Max.
 1.3 INSULATION RESISTANCE:10 Mohms Min/300V DC/10ms.
 2.ALL APPLICABLE MATERIAL AND PROCESS CONTROL MUST BE IN COMPLIANCE WITH RoHS2.0 RESTRICTED SUBSTANCE.
 3.MARK ▼ AS THE KEY CONTROL DIMENSION.

SHELL	SHIELD	BLACK+BRAID	SHELL
A1,B1,A12,B12	GND		A1,B1,A12,B12
A5	CC	BLUE	A5
A6	D+	GREEN	A6
A7	D-	WHITE	A7
A4,B4,A9,B9	VBUS	RED	A4,B4,A9,B9
P1	SIGNAL	COLOR	P2

WIRE CONNECTION TABLE

4	OVERMOLD	PVC,45P,BLACK	A/R	kg
3	INNERMOLD	PE,CLEAR	A/R	kg
2	CONNECTOR	USB2.0 CM,PIN G/F,LCP BLACK,SHELL NICKEL	2	PCS
1	CABLE	23AWG(53/0.08TC)*2C+30AWG(11/0.08TC)*2C+30AWG(30/0.05TC)*1C+AL+B(16/10/0.06TC) BLACK OD:3.5mm CABLE	A/R	mm
ITEM	NAME	DESCRIPTION	Q'TY	UNIT

X.±1	X°.	ACT	TITLE: Type-C To Type-C Cable								
.X±0.3	.X°										
.XX±0.20	.XX°										
.XXX±0.100	.XXX°										
UNITS:	mm	DRAW: 2021.03.10		Item NO: AC3096							
THESE DRAWINGS AND SPECIFICATIONS ARE THE PROPERTY OF MSH ELECTRONIC AND SHALL NOT BE REPRODUCED, COPIED OR CUED IN ANY MANNER WITHOUT THE PRIOR WRITTEN CONSENT OF MSH ELECTRONIC.		CHKD:		<table border="1" style="display: inline-table; vertical-align: middle;"> <tr> <th>SCALE</th> <th>SHEET</th> <th>REV.</th> </tr> <tr> <td>1:1</td> <td>1/1</td> <td>A0</td> </tr> </table>		SCALE	SHEET	REV.	1:1	1/1	A0
		SCALE	SHEET			REV.					
		1:1	1/1			A0					
APPD: 2021.03.10											